



OXFORD FAMILY ESTATES
Property Sales and Services



Willow Lodge, Skegness Road, Ingoldmells

£400,000

🛏️ 3 🚿 2 🚗 3



Be sure to check out the 360 degree virtual tour of this spacious 3 bedroom detached house and all its features in the heart of Ingoldmells, brought to you by Oxford Family Estates. This unassuming gem, with open fields views backing on to the watercourse comprises of a double garage with remote doors, a large kitchen with island, a large dining room with double doors flowing into a nearly 30 foot lounge. Double doors out to the patio with a workshop/games room with power & water and a toilet. The en-suite master and 2nd bedroom both have walk-in wardrobes and the 3rd bedroom leads through to a large storage room above the garage. The beautiful garden has several sections including a secluded private rear lawn, vegetable plots, multiple greenhouses and an orchard heading down to the watercourse with a platform. The property also benefits from fully-owned fitted solar panels, reducing energy bills and receiving a feed in tariff.

Entrance hallway

Kitchen 5.51m x 5.02m max (18' x 16'5")

Dining room 5.60max x 5.36m max (18'4 x 17'7")

Lounge 9.08m x 4.97m (29'9" x 16'3")

Master Bedroom 9.10m max x 4.97m max (29'10" max x 16'3" max)

En-suite 3.20m x 1.85m (10'5" x 6')

Bedroom 2 5.36m x 4.14m (17'7" x 13'6")

Bedroom 3 3.80m max x 3.16m max (12'5" max x 10'4" max)

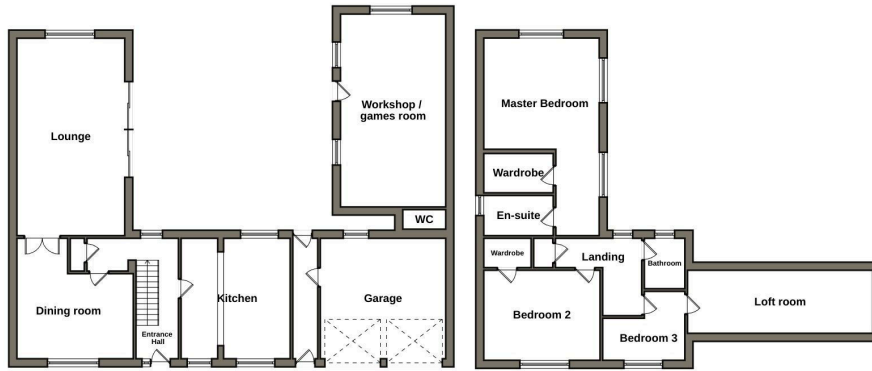
Storage/Loft room 8.54m x 2.90m (28' x 9'6")

Bathroom 2.32m x 1.87m (7'7" x 6'1")

Workshop/ games room & WC 8.87m x 4.85m (29'1" x 15'10")

Garage 5.78m x 5.54m (18'11" x 18'2")





Floorplan is indicative of layout only and should not be used for accurate measurement or structural purposes.

- Detached House
- 3 Bedrooms & 2 Bathrooms
- 3 Reception Rooms
- Very Large Rooms
- Workshop/Games Room
- Double Garage
- Large Driveway with Ample Parking
- Extensive Mature Gardens
- Gas Central Heating
- Tax Band F



OXFORD FAMILY ESTATES
Property Sales and Services

